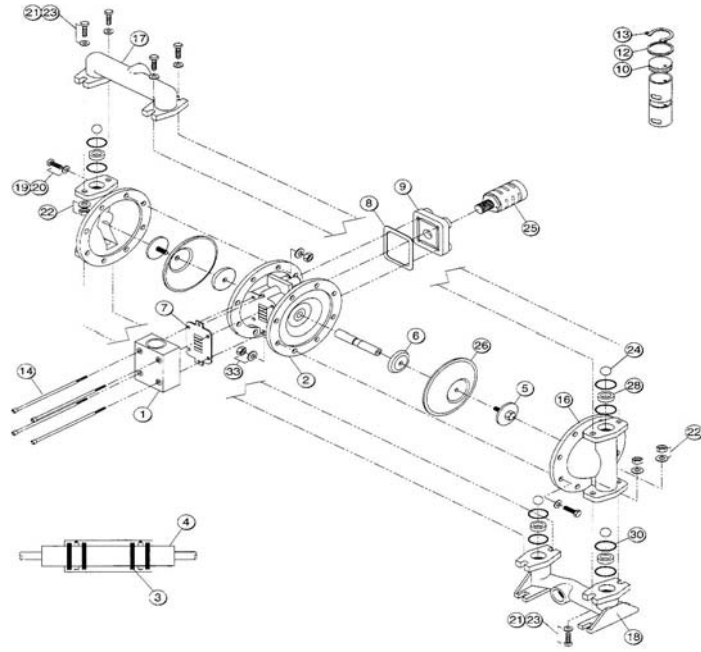




PO BOX 294488 LEWISVILLE, TX 75029  
 TELEPHONE 214-477-1344  
 FAX 972-317-6889

## Spare parts - Diaphragm pump Type C 0.5 - Metal CUBICON



with rubber elastomers  
 Alum. C 0.5 AA

Pos.	Description	Part No.:
1	Air valve assembly, body and piston (PP)	05-100P
1a	Piston, air valve	05-100PS
2	Center section assembly (PP)	05-192P
3	O-ring, center block	05-192J
4	Shaft	05-101A
5	Outer diaphragm plate	05-199A
6	Inner diaphragm plate	05-199C
7	Gasket, air valve	05-100B
8	Gasket, muffler plate	05-192MG
9	Muffler plate	05-192M
10	End cap with guide, air valve	05-100R
12	O-ring, end cap air valve	05-100U
13	Snap ring, end cap air valve	05-190T
14	Bolts M 6x125, air valve (SS)	05-101AS
16	Pump chamber	05-195A
17	Discharge manifold	05-196A
18	Suction manifold	05-197A
19	Bolts M 6x20, Pump chamber	05-197B
20	Locking washer, Pump chamber	05-197W
21	Bolts M 6x40, manifold	05-196B
22	Nut, manifold (SS)	05-196N
23	Washer, manifold (SS)	05-196W
24	Valve ball, Sanoprene	05-111SA



Pos.	Description	Part No.:
25	Muffler	05-375M
26	Diaphragm, Buna-N-Dome shape	05-D193B
28	Valve seat stainless steel	05-110S
30	O-ring for valve seat, Buna-N	05-110B
31		
33	Nut and washer, pump chamber	05-193NW